

RANGE 3A

SOP

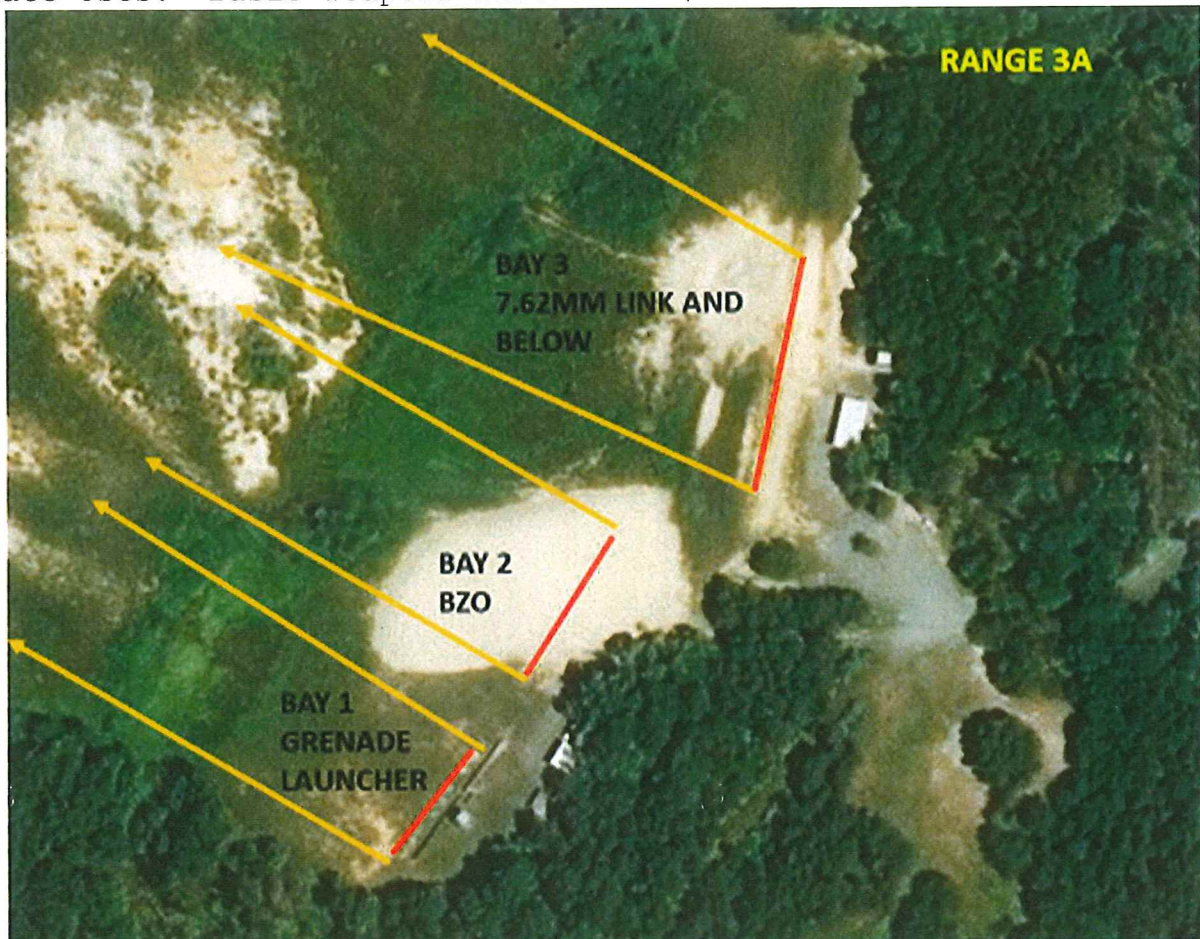
INFORMATION

Description: Field firing
Status: Active
Location: 85586488
Number Firing Points: Three separate firing lines.

RANGE USES

Primary Use: Individual small arms familiarization firing, grenade launcher firing, and automatic weapons qualification.

Alternate Uses: Basic weapons instruction/BZO.



WEAPONS ACCOMMODATED

- Pistol
- Shotgun
- Service Rifle
- M203 or handheld grenade launchers
- SMAW Trainer
- AT-4 Trainers
- Light and Medium Machine Guns
- M72 LAW (Trainer)

AMMUNITION AUTHORIZED

- Pistol (All)
- Shotgun (All)
- 5.56mm (All)
- 7.62mm link
- AT4 9mm Spotter
- M203 40mm HE, Illum, Practice
- SMAW 9mm Spotter
- M72 21mm Spotter

<u>Target Description</u>	<u>Quantity</u>
EODT	4
Steel Hulks	3
Non Automated Target Systems	16

PRIMARY DIRECTION OF FIRE. Northwest

RANGE USE RESTRICTIONS/COMMENTS

1. Only weapons and ammunition listed in this SOP will be used on this range.
2. OIC and RSO must be present while live fire is in progress.
3. This is a sensitive fuse impact area. **DOWN RANGE MOVEMENT INTO THE DUDDED IMPACT AREA IS PROHIBITED ON RANGE 3A.** Only Explosive Ordnance Disposal (EOD) personnel have access.
4. Troops will not go past the dudded impact area signs for any reason.
5. Ensure range flags are posted, ear protection is worn (eye protection for steel), safety brief is given, Range Control contacted and all fires are directed between the left and right lateral limits markers (black and white striped).
6. All brass, trash, targetry and materials will be removed completely at the end of training by the using unit. This includes any materials used to place targets on (BZO lanes).
7. All left and right lateral limit markers are black and white striped. Left side markers have stripes running top to bottom, left to right. Right side markers have stripes running top to bottom, right to left. This range has two (2) sets of markers. The set on the left is for Bay 1. The set on the right is for Bay 3.
8. Maneuvers are not authorized on Range 3A.
9. **Bay 1 is for hand held grenade launchers only.** HE ordnance (40mm) will only be fired from Bay 1 into the left side impact area depicted by lateral limit markers. High Explosive (HE) grenades will not be fired when it is snowing, or there is 2 inches or more of snow or water on the ground.

10. **Bay 2 is only used for weapons BZO.** Shooters will not use the left and right lateral limit signs that are downrange in the impact area. For BZO, the far left and right BZO targets will serve as the lateral limit markers. Shooters will not fire at the steel targets downrange.

11. The number of shooters that can be safely allowed at one time in Bay 2 will be determined by the OIC/RSO. Approximately 15-20.

12. **Bay 3 is for small arms, light and medium machineguns, spotter/trainer rounds and non-HE hand held grenade launchers.** The number of shooters/weapons that can safely be allowed in Bay 3 will be determined by the OIC/RSO.

13. Entrance or exit to or from Range 3A is prohibited when MCB 3 is closed due to Murphy Demolition Range detonating charges. Units will follow all special instructions provided by Range Control.

14. Units that do not occupy their range within two hours of their scheduled occupy time will lose the use of that range for that day.

15. Range 5 cannot be occupied when Range 3A is firing 7.62 mm from bay 4.

16. GP-4 cannot be occupied when Range 3A is firing 7.62, 5.56 and 9mm from bay 4.

APPLICABLE MAP SHEET. All grid coordinates listed in this order apply to the Quantico Military Installation Map V834S Edition 5-NGA 1:25000.

FACILITIES (Number of Each)

Towers: 2

Sheds: 1

Ammo Breakdown: 0

Parking: Yes

Description of Other Structures: Two covered bleachers

UTILITIES AVAILABLE

Electricity: None

Lights: None

Water System: None

INSTALLED COMMUNICATIONS. None

MEASURED DISTANCES

MILES

MILITARY GRID REFERENCE

TBS	1.0	87106390
Range Control	1.5	87506350
ASP	6.8	91256605
Fire House 3	4.0	89606410
Nearest MEDEVAC LZ	0.0	85586488 (LZ ROBIN/R3A)

MEDEVAC LZ: LZ ROBIN. Located on Range 3A. Aircraft can land anywhere on the range that the pilot deems safe.

LASERS AUTHORIZED. Class 3B or lower.

AVAILABLE DAYS/HOURS. 362/All

AREA SUITABILITY

<u>Unit Type</u>	<u>Unit Size</u>	<u>Number of Units</u>
Combat Arms	Squad-Platoon	1 Platoon

GEOGRAPHICAL DATA

Access Routes: Road entrance from MCB 3
Soil Type: Dirt/Gravel
Terrain Type: Level
Vegetation: Grass/Woodland

COMMUNICATION REQUIREMENTS:

1. A radio check is required immediately upon occupying any portion of the RTA, every 30 minutes in a live fire status and every 3 hours in a non-live fire status.
2. The Range Control Facility (RCF) Fire Desk Net Control call sign is "Range Control". Your call sign is "Range 3A".
3. The primary RCF Fire Desk Net Control frequencies are: ELMR talk group "RC Safety" (ground) and 323.7 AM UHF (air).
4. The secondary RCF Fire Desk Net Control is telephone, numbers: 703-784-5321 or 5322.
5. OIC/RSO will monitor the RCF primary and secondary Safety Nets at all times. Instant communication is required.
6. Any unit with organic ELMR radios will have their ELMR radios programmed with the "RC Safety" talk group and use those radios as their primary means of communication within the RTA.
7. Units without organic ELMR assets will be issued ELMR radios from RMB upon check-in.
8. Approved Non-ELMR radios are only authorized for internal communication (ground) upon approval from the MCB Quantico Spectrum Manager.
9. If the RCF cannot reach a unit within the RTA via primary communication, the unit will be contacted via the secondary means of communication.
10. Upon loss of primary communication the OIC/RSO will initiate a "check fire"/cease training status and will contact the RCF via secondary communication. This communication will be maintained while primary communication is being restored. Units may only resume firing/training

once primary communication has been re-established and clearance is granted by the RCF.

INJURY CLASSIFICATIONS:

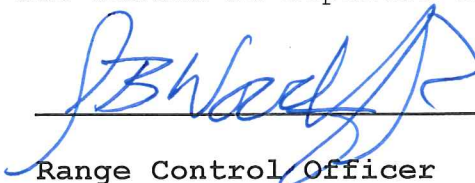
Injuries are classified into the following categories in order to aid in casualty evacuation from the RTA.

1. ROUTINE. Routine injuries are those injuries that are not threatening to life, limb or eyesight; and conditions or illnesses treatable by medication or procedures available at the base medical facilities.
2. PRIORITY. Priority injuries are those injuries that require immediate medical attention but are not threatening to life, limb, or eyesight if treated promptly.
3. URGENT. Urgent injuries are severe injuries that are threatening to life, limb, or eyesight and require immediate medical attention.
4. MASS CASUALTY. A mass casualty is a series of injuries with multiple priority and urgent medical patients.

MEDICAL EVACUATION (MEDEVAC) PROCEDURES:

1. Injury occurs.
2. Range immediately cease-fires.
3. Medical support evaluates/treats injured personnel.
4. OIC/RSO notifies the RCF of the injury, stating briefly what happened, the extent of the injury and what type of MEDEVAC transportation needed (ground/air).
5. Maintain constant radio contact with Range Control and await further instructions.

*Minor injuries and illnesses requiring routine medical services in the field need not be reported to RMB but should be reported in unit training logs.



Range Control Officer

Date: 8 OCT 2019